

WESTORIA

740 SAGEWOOD CT., GOSHEN, IN



CUSTOM MAYFIELD FEATURES

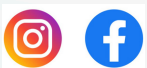
- Zero clearance entry
- Andersen windows
- Thermo-tru fiberglass front door
- 9ft Ceilings on the 1st Floor
- 11ft ceiling in the Foyer
- Finished basement with rec. room, bed, and full bath
- Quartz Countertops
- Vinyl Shakes with brick accent exterior
- Maintenance free lawn and landscaping
- Large Covered front porch
- Ceramic shower in Master Bath

HOME PRICE:	\$ 421,523.00
FINISHED BASEMENT:	\$ 36,963.00
LOT 12 PRICE:	\$ 59,900.00
LANDSCAPE & IRRIGATION:	\$ 15,000.00
TOTAL HOME PRICE:	\$ 533,386.00



DESIGN AND QUALITY - A TRADITION

CONTACT US



SCHROCKHOMES.COM



574-534-2706



2523 MESSICK DRIVE | GOSHEN, IN

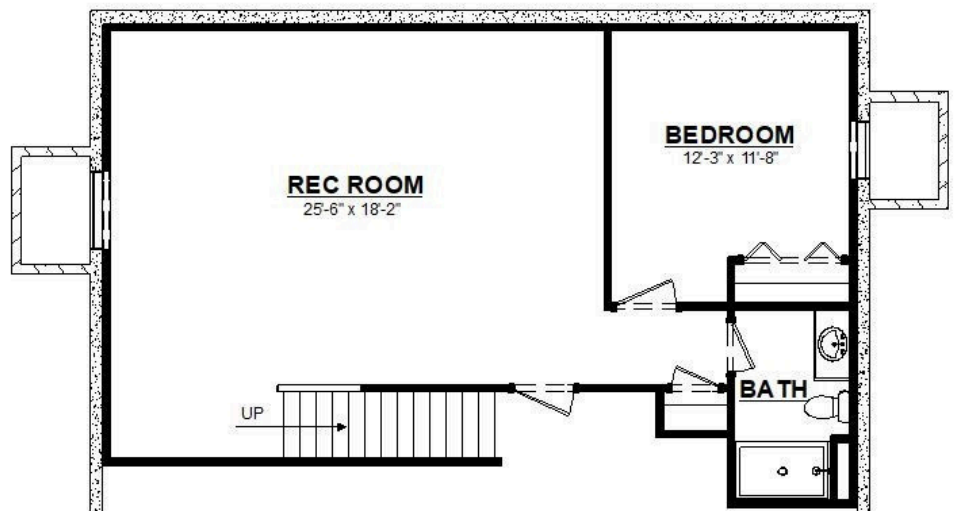


1ST FLOOR

1st Floor: 1,550 sq.ft
 Basement: 820 sq.ft.
 Total Finished: 2,370 sq.ft.
 Garage: 583 sq.ft.



BASEMENT



SCHROCKHOMES.COM



574-534-2706



2523 MESSICK DRIVE | GOSHEN, IN